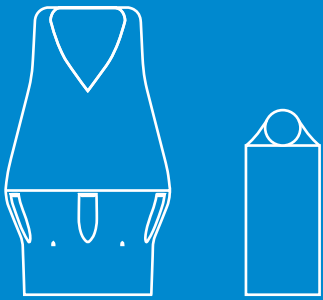
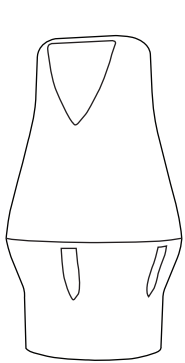
 Only change the battery in an area that is free from dust, moisture, flammable liquids and gases. Avoid touching any electronic components.



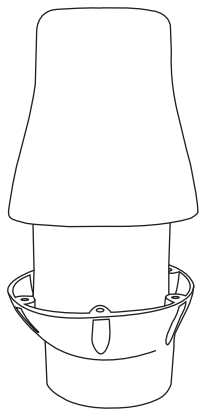
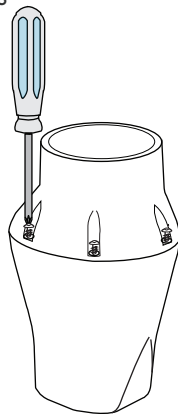
Battery Replacement Guide

Need help? Chat: waterwatch.io
 Guides: help.waterwatch.io
 Phone: NZ (03) 477-2779
 AUS (07) 5235-5288
 Email: info@waterwatch.io

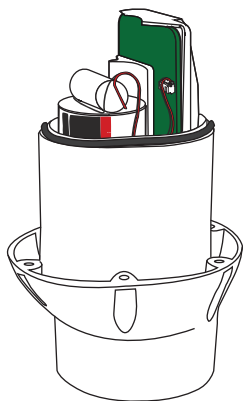


1
Remove the monitor from the mount (see over). Only change the battery in an area that is free from dust, moisture, flammable liquids and gases

2
Turn upside down and loosen the screws

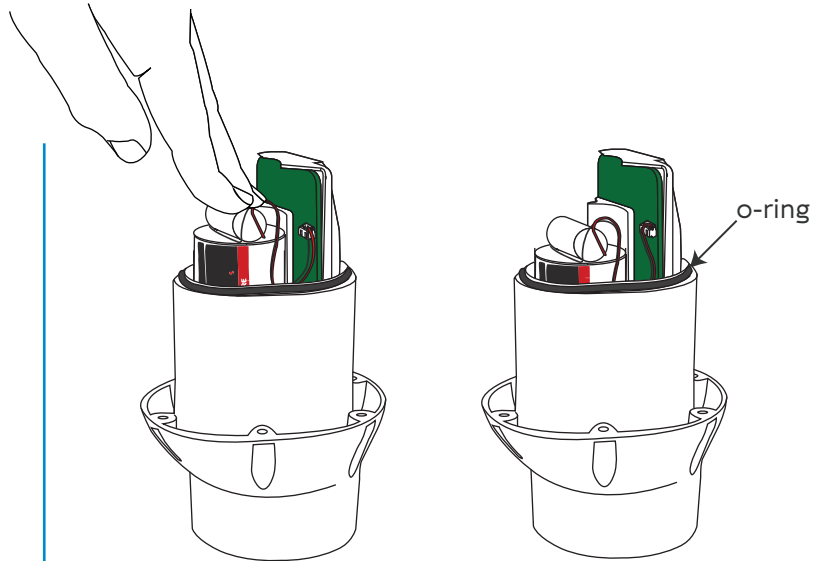
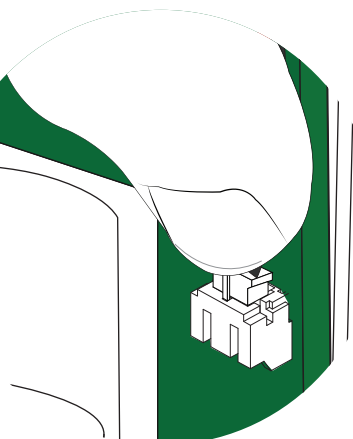


3
Turn the monitor back over (the screws will fall out) and remove the top cover



4
Use your thumbnail to pinch the battery **plug** and slide it out.

Then remove the old battery from the cradle



5
Plug the new battery in and push it firmly into the cradle upright as pictured. Battery life will be halved if it is inserted upside down. Tuck the battery wires inside the case to avoid pinching when placing the top cover on

6
Check that o-ring is in place and place the top cover back on. Turn the unit upside down and screw the base into the top cover

If you are using a power tool select the lowest setting to avoid damage.

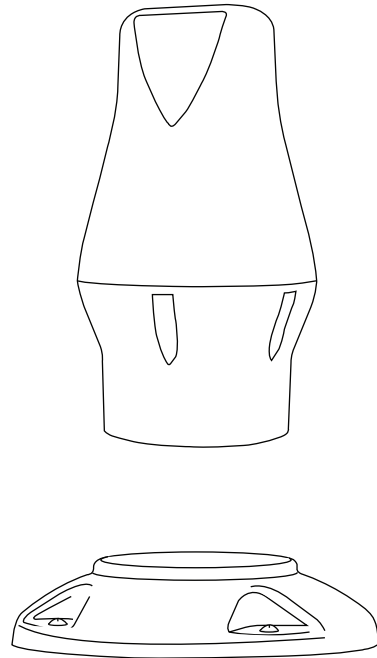
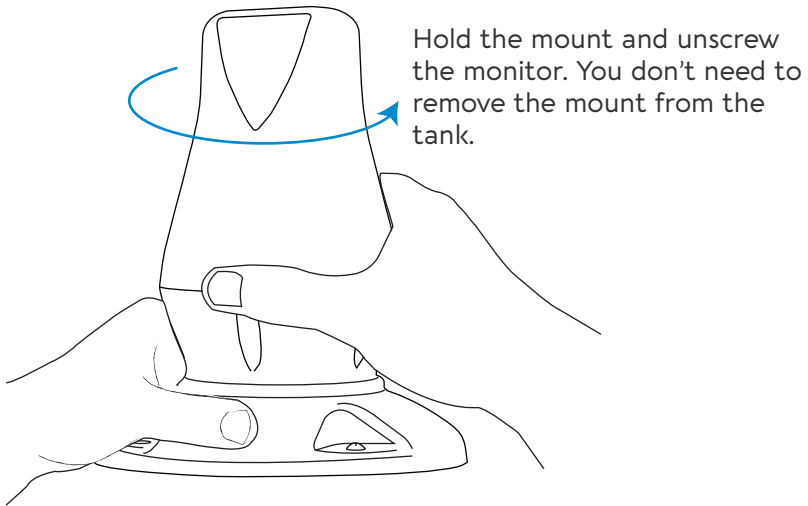
Make sure that there are no gaps between the top and the base

7
In the app, you'll be prompted to reset the battery when you select your monitor

There is also a battery reset option in the diagnostics menu when you connect with bluetooth

Removing the monitor from the mount

Tank Monitor



Environmental Monitor

