



1. Welcome to HiLo!

If this is your first HiLo monitor:

Using your phone camera, scan the QR code on the front of this brochure to begin the account setup. Alternatively go to signup.hilomonitoring.com in your web browser.

Follow the setup instructions to:

Create your account and organisation
Select your monitor
Enter billing information

Next, download the app:

Using your mobile phone, search for the [HiLo Level Monitoring](#) app in the Play Store or the App Store and download.



Log into the app using your new HiLo account email address and password.

2. Add your tank

Open the HiLo Level Monitoring App:

If this is your first time using the mobile app, you'll be prompted to add your new monitor by again scanning the QR code on the front of this brochure.

If you are adding another monitor to an existing organisation, select the Add tank button at the bottom of your home page.



Follow the app instructions to scan the QR code on the front of this brochure or by entering the claim code.

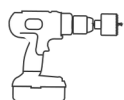
Need help?

Chat: hilomonitoring.com
Guides: help.hilomonitoring.com
Email: support@hilomonitoring.com
Phone: NZ (03) 477-2779
AUS (07) 5300-2959

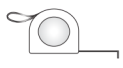
3. Ready to Install Your Sensor?

Now that you have created your account it's time to install and set up your tank monitor.

Tools you'll need:



50 - 60mm Hole Saw



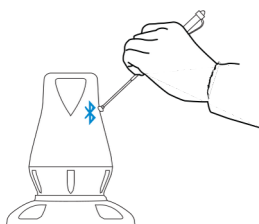
Tape Measure



4 X M4 Screws (Supplied)



Magnet wand (supplied)



The magnet wand is used to activate the Bluetooth connection during the Set Up Wizard

4. Set Up Wizard

You'll need to be [at your tank](#) when you are ready to follow the Set Up Wizard steps.

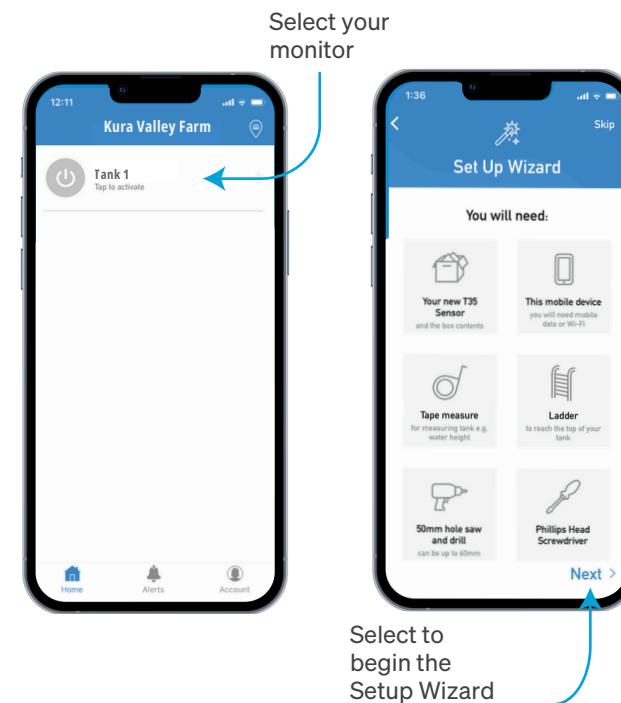
The Set Up Wizard will help you to:

- ◆ Connect to the tank monitor with Bluetooth
- ◆ Drill a 50 - 60mm hole in your tank
- ◆ Take measurements
- ◆ Attach your tank monitor to the tank
- ◆ Verify your first measurements
- ◆ Name your tank monitor

NOTE

The tank monitor is designed to detect water surfaces from a 200mm distance or further.

For best results your tank monitor should be installed at least **300mm** above the highest water level.

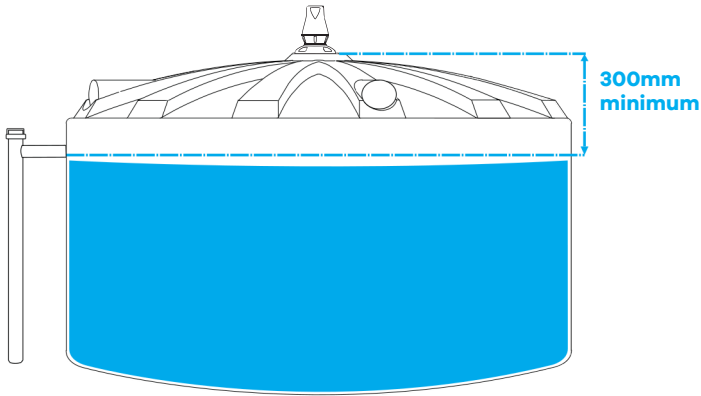


Tips for successful installation

For best results your tank monitor should be installed at least 300mm above the highest water level. The tank monitor is designed to detect water surfaces from a 200mm distance or further.

Ensure that there are no obstructions directly under your chosen mounting position such as ball cocks, inflow and outflow pipes.

The tank monitor should be as close to level as possible, at no more than a three degree angle.



Plastic Tanks

The best installation spot is on the center of the tank roof. This is generally the highest point and provides an unobstructed view to the water surface.

If the tank monitor can't be installed level, angled mounting shims can be purchased from our online store. Otherwise the tank lid can be used.

If you have a Devan tank, mount the monitor off center. These tanks have metal in the center.

Concrete Tanks

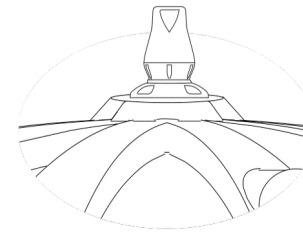
Mounting high (but off center) using the mounting shims is the most common method for installation on concrete tanks.

You will need to supply your own concrete screws.

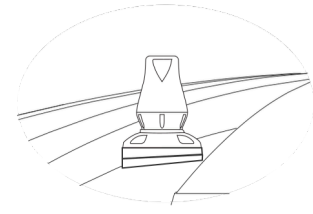
Some customers prefer replacing the inspection lid with timber to install the tank monitor.

Remember to leave at least 300mm between the tank monitor and the highest water level!

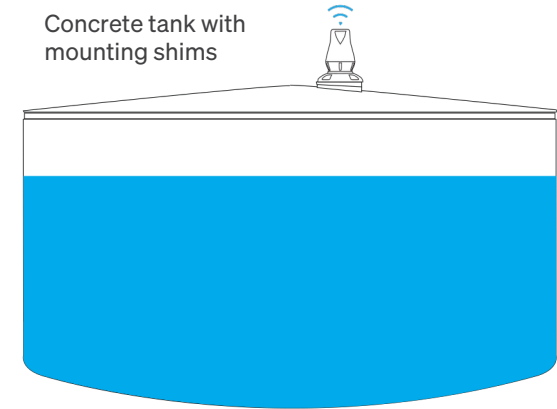
Tank lid



Using mounting shims



Concrete tank with mounting shims



Quick App Guide

